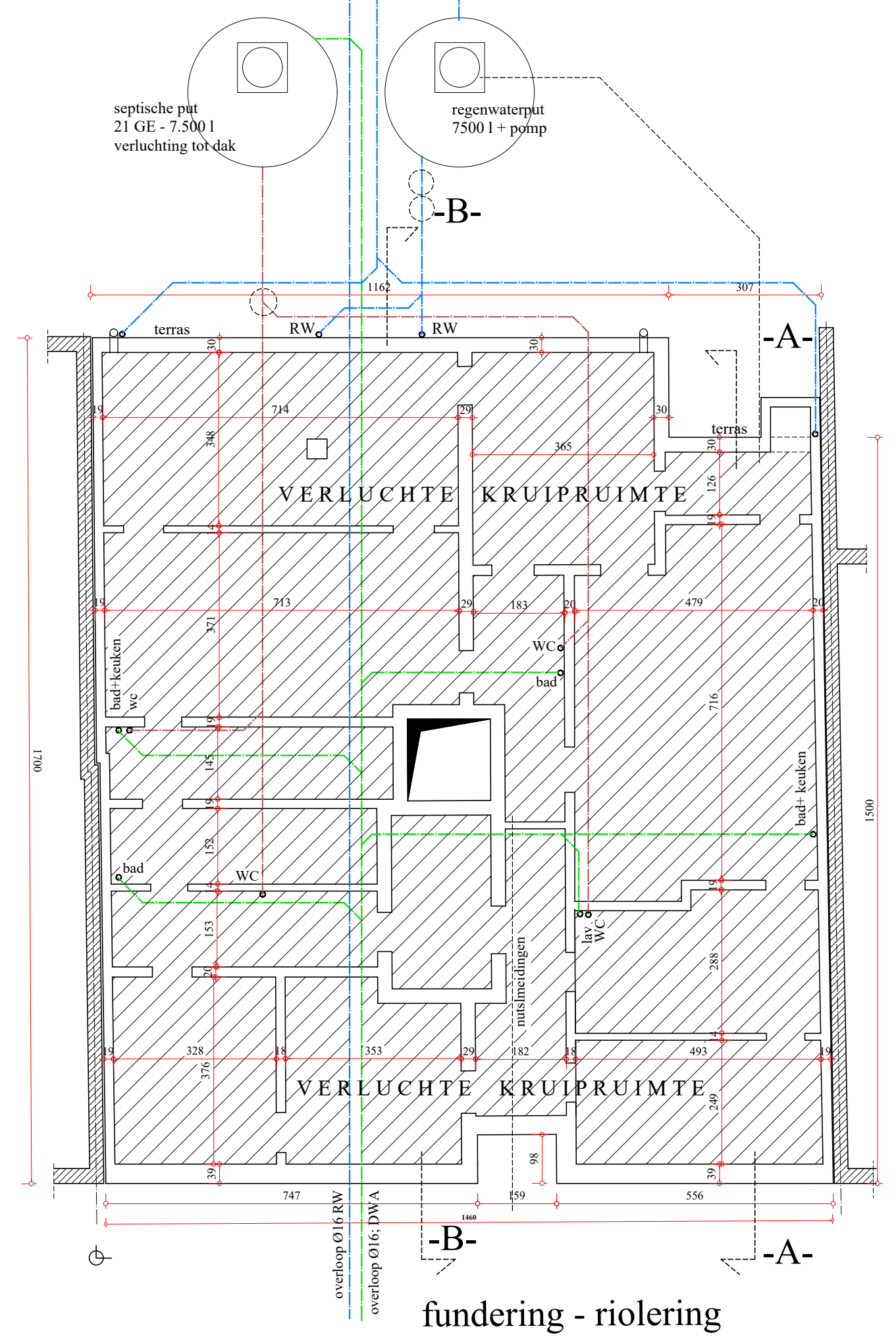
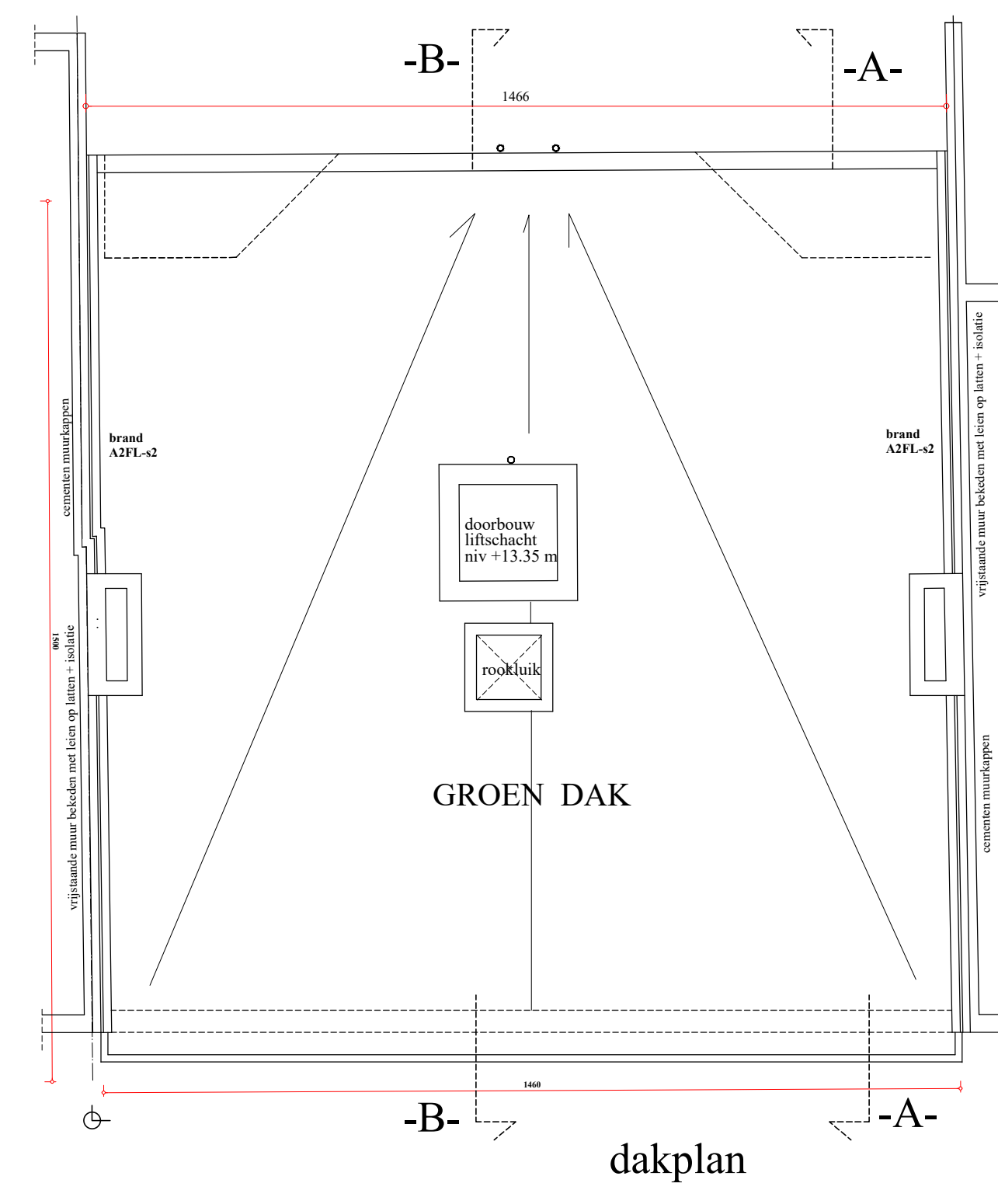


- ① lichte gevelsteen
 - ② prefab beton antraciet
 - ③ kroonlijst glad beton
 - ④ dorpele/plint arduin
 - ⑤ alu schrijfwerk
 - ⑥ metalen sektionaalpoort
 - ⑦ alu dakrand
 - ⑧ metalen balustrades
 - ⑨ zinken afvoerbuisen
 - ⑩ crepi gebroken wit
- wanden alle kompartimenten gemest REI-60'
 - vloerplaten in beton REI-60'
 - deuren EI30
 - breedte trappen : 90 cm
 - optrede 18 cm, aanrede 24 cm

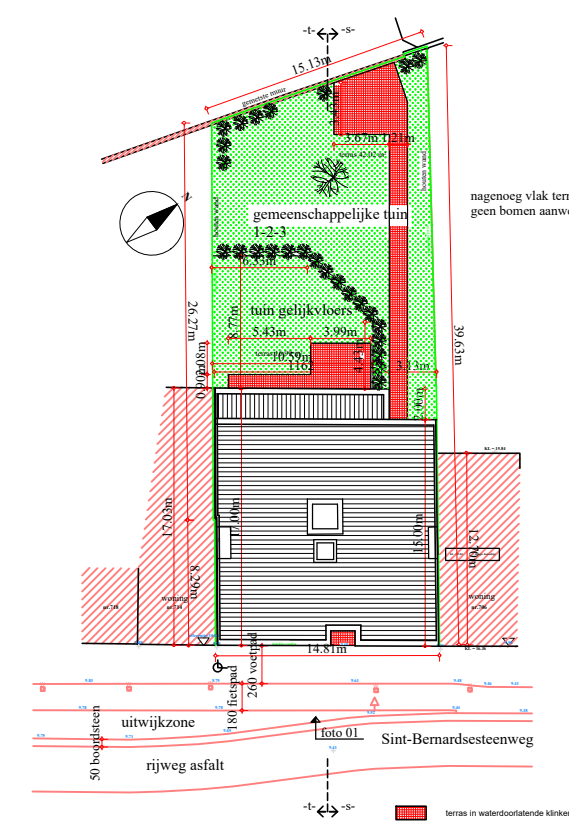
- 🔥 brandblusser
- 🚪 bediening RWA
- 🚪 uitgang
- 🔄 circulatie
- 🚪 rookluik 1,00 m²
- 🔥 brandhappel



fundering - riolering

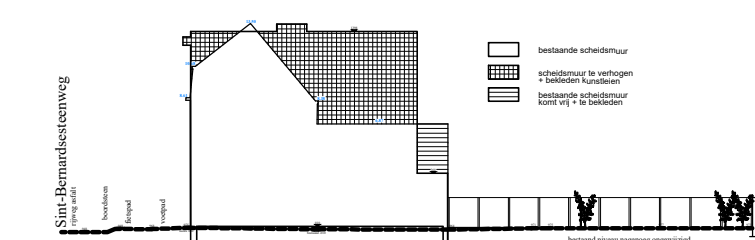


dakplan

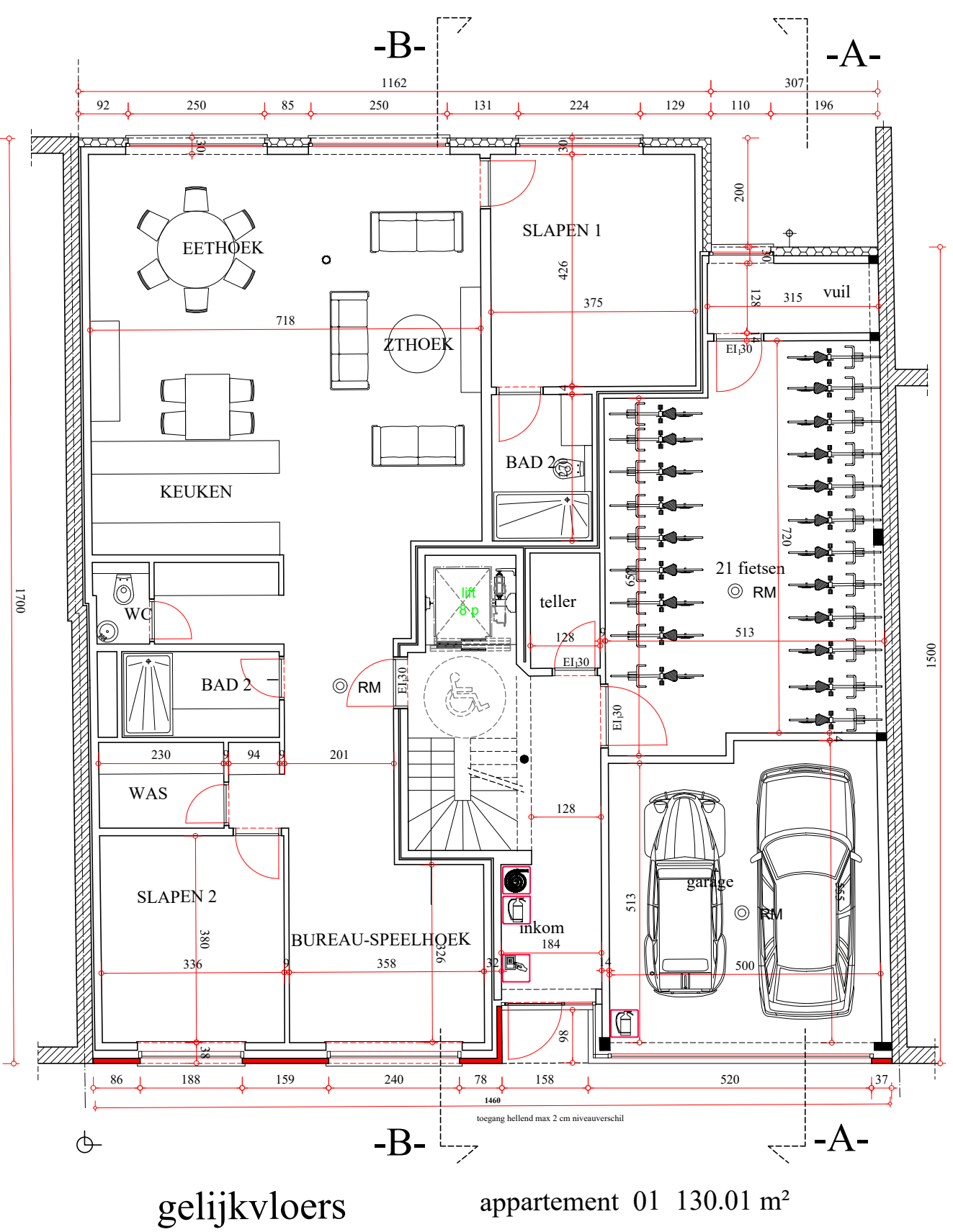


nieuw terreinprofiel -s-s- scheidswand rechts

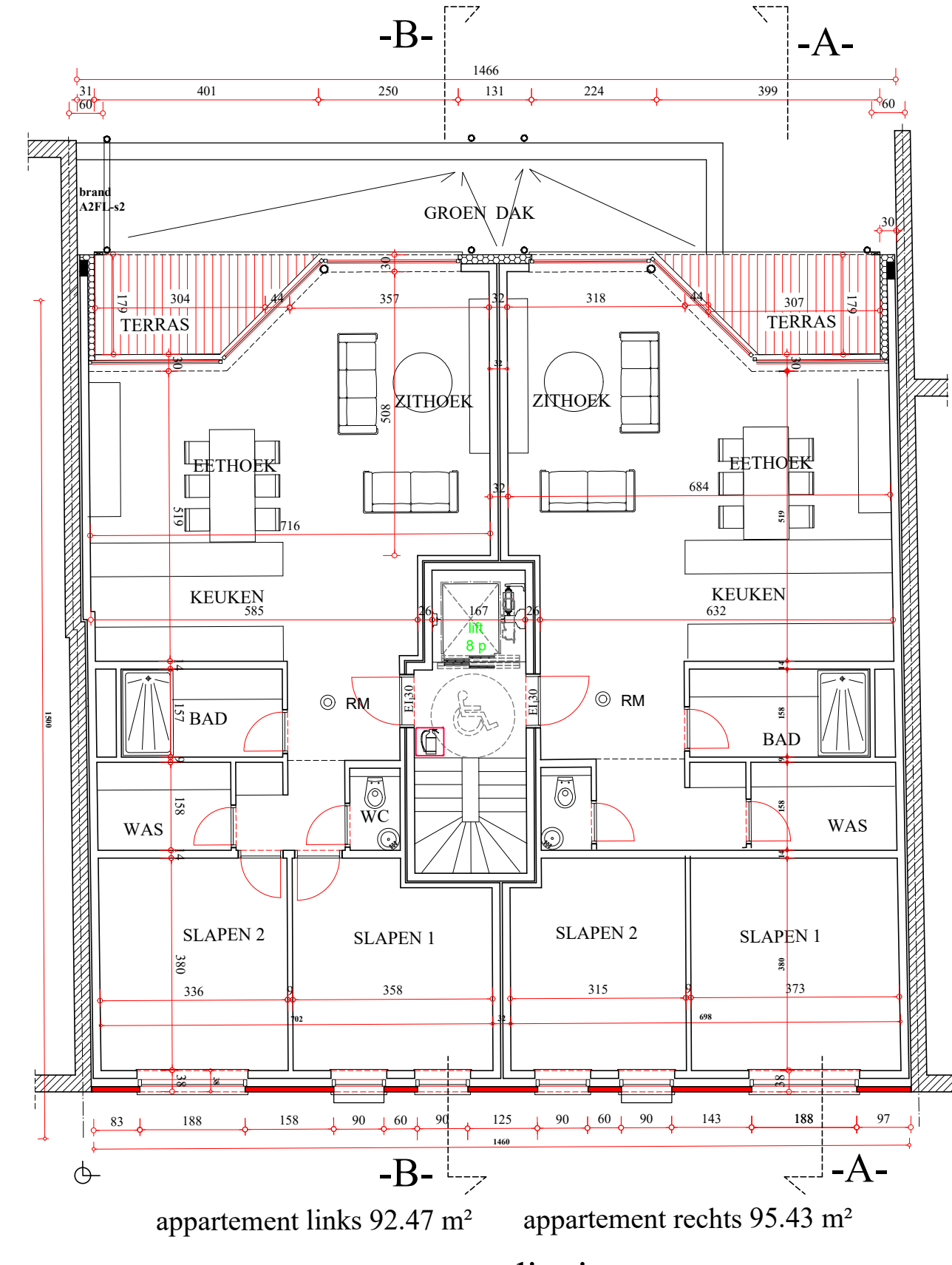
nieuwe inplanting



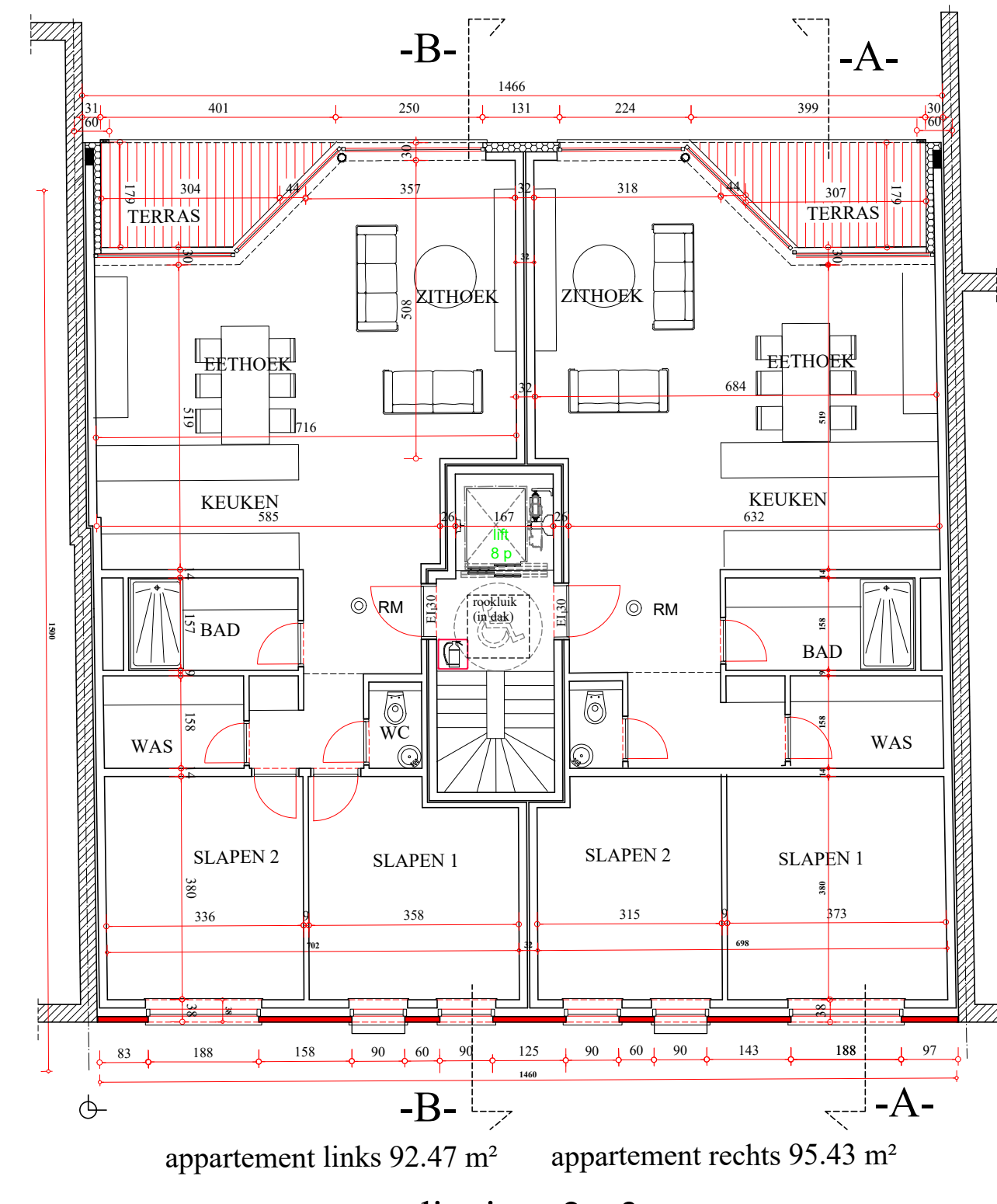
nieuw terreinprofiel -t-t- scheidswand links



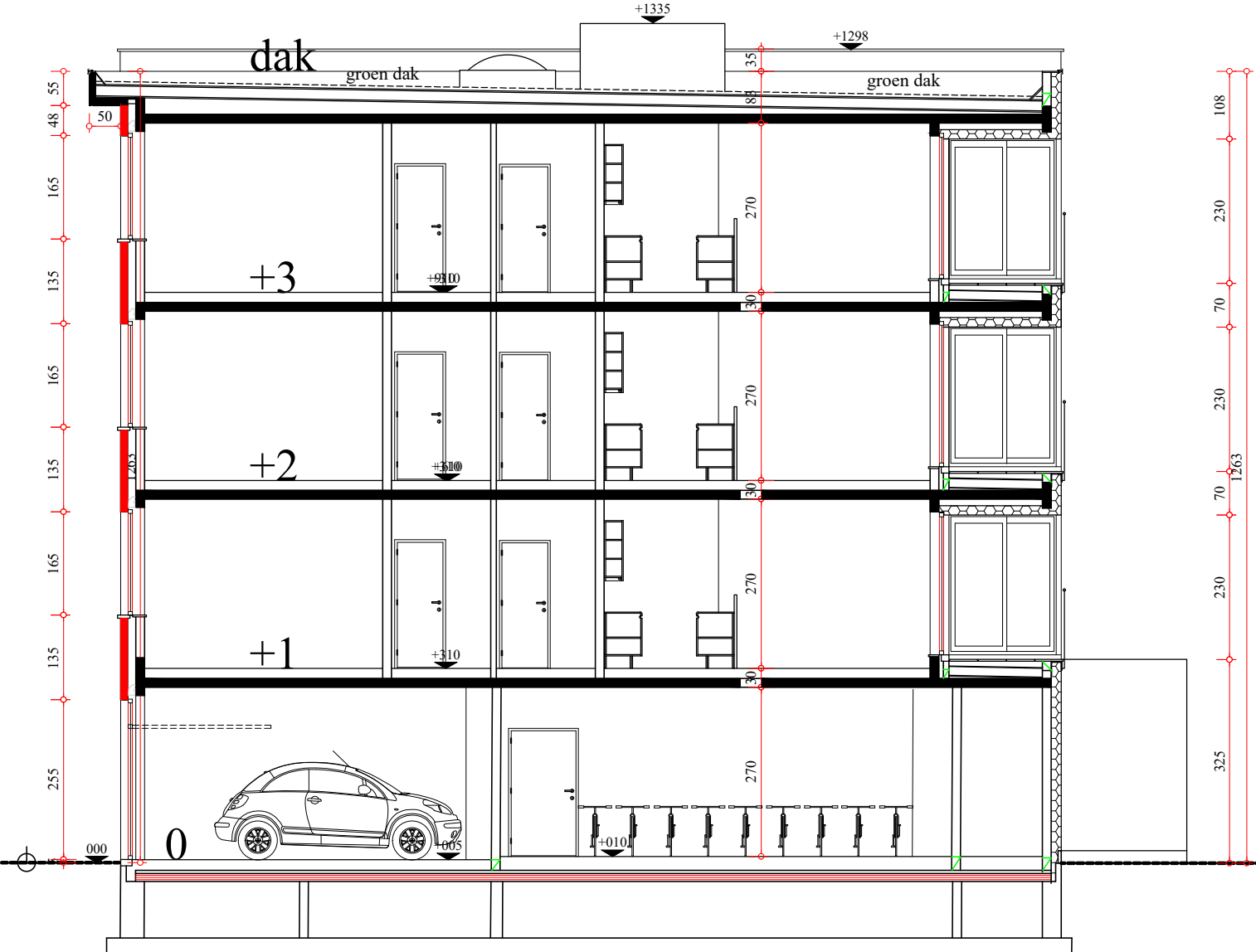
gelijkvloers appartement 01 130.01 m²



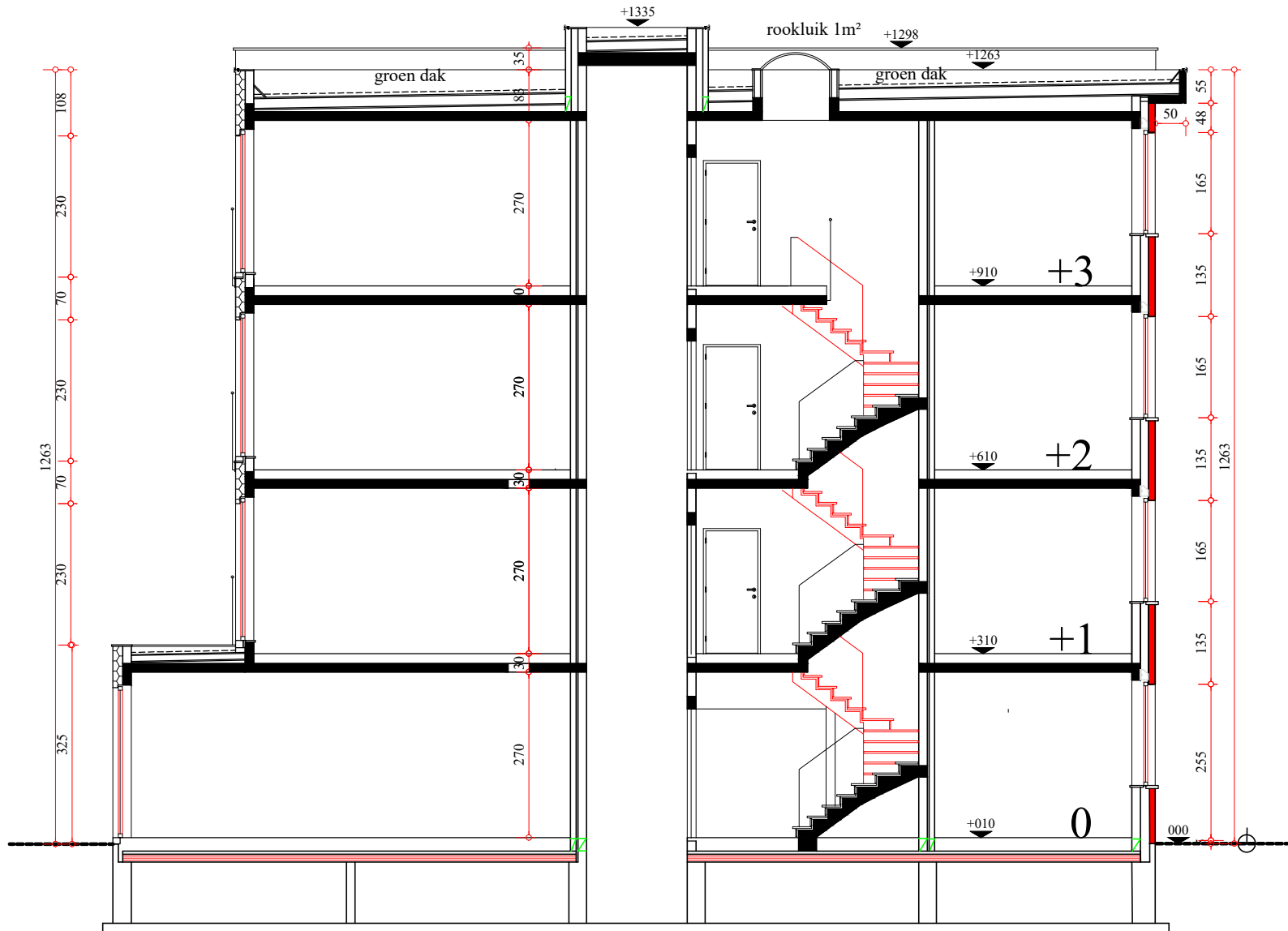
appartement links 92.47 m² appartement rechts 95.43 m²
eerste verdieping



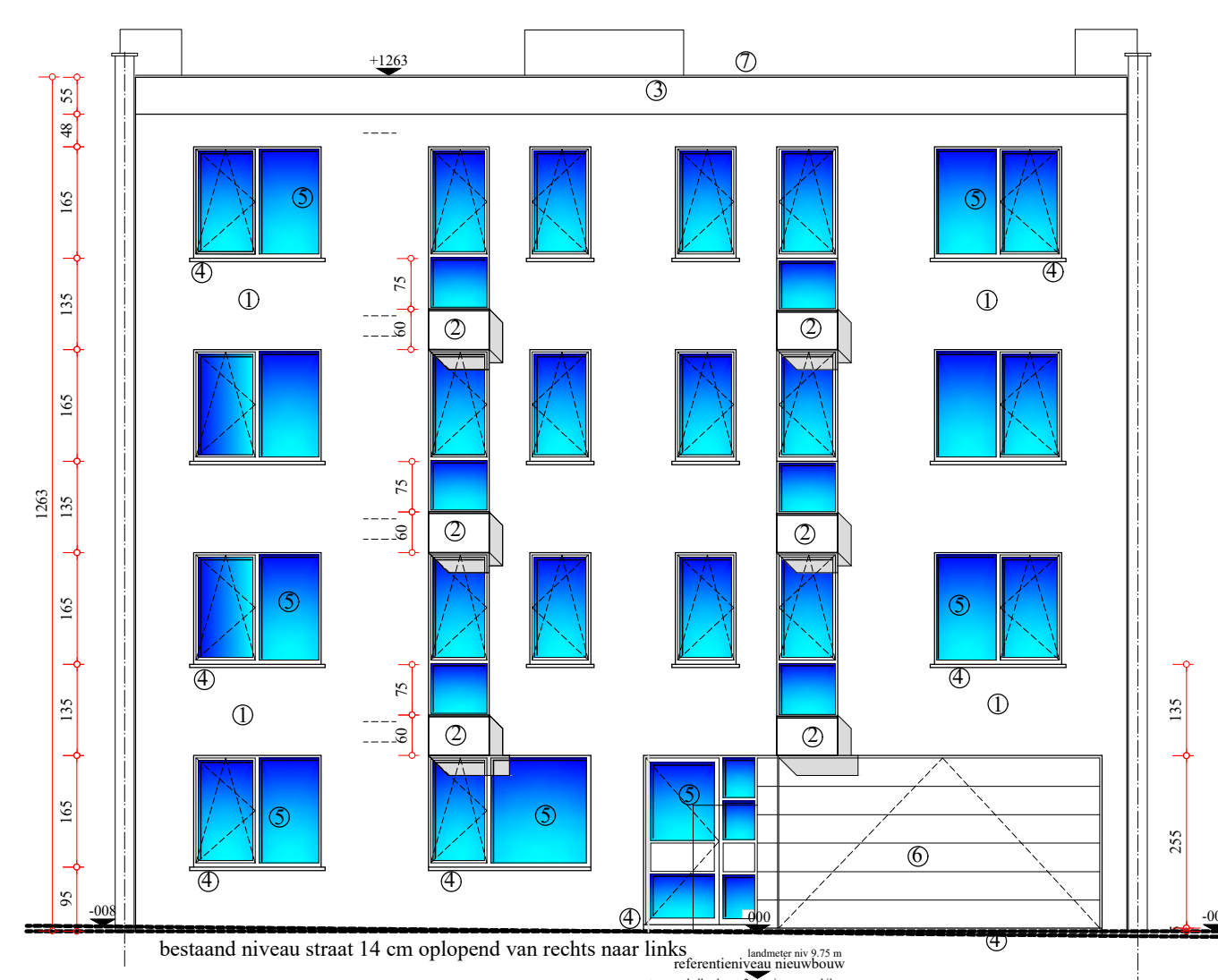
appartement links 92.47 m² appartement rechts 95.43 m²
verdieping 2 - 3



doorsnede -A-A-



doorsnede -B-B-



voorgevel



achtergevel